



# A WARM WELCOME



# CANINE NEWS

Canine Club News. May 2011. Issue 1

Welcome to The Canine Club's first newsletter!

We are hoping to send a newsletter out to our members each month and it will be a means of communicating all sorts of exciting developments as the business continues to grow. It will also contain updates, news and advice from a local vet. This month, Bollington Veterinary Centre is offering some very valuable advice on Lungworm.

Each month we will also introduce you to a member of The Canine Club team - all of whom I am extremely proud to have working here.

The Canine Club launched in February 2010 with a lot of trepidation and no real idea whether the idea of a club based dog care service would take off. Well 14 months later we have gone from having a couple of dogs to look after each week to having in excess of 80!! I never in my wildest dreams expected the business to grow to the extent it has.

We have so many ideas and innovations for the business but the bottom line for everyone involved is the care, health, happiness and welfare of all the dogs that come to us. We want them to have the best possible time in the safest possible surroundings!

One last note is to thank you all for the support you have given to me, my staff and the business as a whole. I am very proud of what we have achieved and look forward to a long and happy relationship with you and your dog(s).

See you next month!



## Contents

- Introduction from Julian
- Dates for the Diary
- Featured Employee
- New Canine Club Website
- Guidance from Bollington Vets
- Artist's services



## Dates for the diary

### End May bank holiday

The day crèche will be closed on Monday 30<sup>th</sup> May, business resuming as normal on Tuesday 31<sup>st</sup> May.

### August bank holiday

The day crèche will be closed on Monday 29<sup>th</sup> August, business resuming as normal on Tuesday 30<sup>th</sup> August.

## Featured Employee – Vicky Orchard

Vicky moved to Cheshire in 2008 - the lure of dogs, horses, hills and the great outdoors bringing both her and her partner, Robin, to Bollington where they have lived for 2 ½ years. They adopted Yogi, a male Boxer, from The Dogs Trust Merseyside in March 2009 and Yogi became one of The Canine Club's first members in February 2010. When she's not working, Vicky loves spending time 'in the saddle' and can be found hacking around the lanes and bridleways of Bollington. Vicky is also studying a diploma in 'professional dog walking' which covers many topics including Canine Law, Canine Body Language, Behaviour and First Aid.



Vicky has joined The Canine Club to lend a hand in all areas – company administration, team organisation, dog walking and crèche supervision – and has quickly found her feet.

Vicky should now be your first point of contact for day to day enquiries regarding your dog's crèche days (including amendments to your usual days) and company administration (membership details, invoices etc). Her email is [vicky@canine-club.co.uk](mailto:vicky@canine-club.co.uk) and she is contactable on 01663 733339.

Next month we'll be introducing – **Lydia Royston**.

The full Canine Club Team:

- Julian Cheetham – Director
- Vicky Orchard – Business Co-ordinator
- Oliver Kenyon – Dog Walker
- Jan Fieldhouse – Dog Walker
- Lydia Royston – Dog Walker



## The Canine Club Website

We have asked a local creative team to help us improve The Canine Club website to make it easier to navigate and become more fun, interactive and informative. They have come up with some great ideas which we hope will be implemented by the summer. One of the ideas we are really keen on is improving the current 'gallery' page by creating a profile for every canine member.

We have recently sent out an email asking for some information about your dog (favourite toy/food/walk & past time etc) - if you could reply as soon as possible with your answers we'd be very grateful!



## Contact Details:

Julian – [julian@canine-club.co.uk](mailto:julian@canine-club.co.uk)

Vicky – [vicky@canine-club.co.uk](mailto:vicky@canine-club.co.uk)

Tel: 01663 733339



## Advice from Nick Rushton MA VetMB MRCVS, Bollington Veterinary Centre

### LUNGWORM – is your dog at risk?

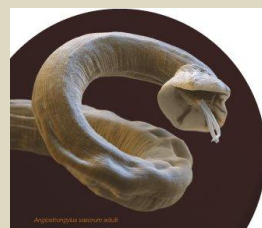
Lungworm is a parasite that infects dogs and foxes in the UK and Ireland. Dogs can become infected with lungworm through eating slugs and snail which may be carrying the larvae of the parasite. While some dogs will eat slugs and snails on purpose, the hidden danger arises from small slugs and snails which can be accidentally swallowed when dogs are drinking from outdoor water bowls, playing with toys left out in the garden, or rummaging through the undergrowth.

### Symptoms

- Breathing problems or coughing, tiring more easily.
- Poor blood clotting leading to excessive bleeding from minor wounds, nose bleeds and anaemia.
- Behavioural changes, seizures, spinal pain, weight loss, loss of appetite, vomiting and diarrhoea.

Younger dogs are more commonly infected – most likely due to their inquisitive nature, however any age or breed can be at risk. If you notice any of the signs above it is important you talk to your vet.

If you are concerned about lungworm, contact your Veterinary Surgeon who can prescribe a routine treatment to prevent your dog from developing an infection with this parasite.



### Animal Portraits

Vicky's mum has been 'wowing' us with her recent pastel interpretations of Yogi, Winnie and a friend's German Pointer (see pictures on the left). We're delighted that she's agreed to make her artistic services available to Canine Club members - all she needs is a couple of good photographs and she will produce portrait within a couple of weeks, depending on her availability.

*My name is Margaret Orchard. I am an amateur artist who lives in Norfolk. I studied art at A-Level gaining an A- Grade for Life Drawing, Still Life and Composition in the late 60's. I attended Bingley College of Education in Yorkshire, where I studied Art as a main subject alongside Education and Geography before qualifying as a Teacher in 1967. It was not until a few years ago that, having been given a set of Acrylic Paints for Christmas, I took up art again and joined a local Art Group. My favourite subjects are flowers and now animals. I use pastels, watercolours, acrylics, pencils and charcoal but my preference is pastels.*

If you'd like to commission Margaret to produce a pastel /watercolour/drawing of a family pet please let us know and Vicky will organise to get your photos to her etc. Margaret's prices are extremely reasonable.